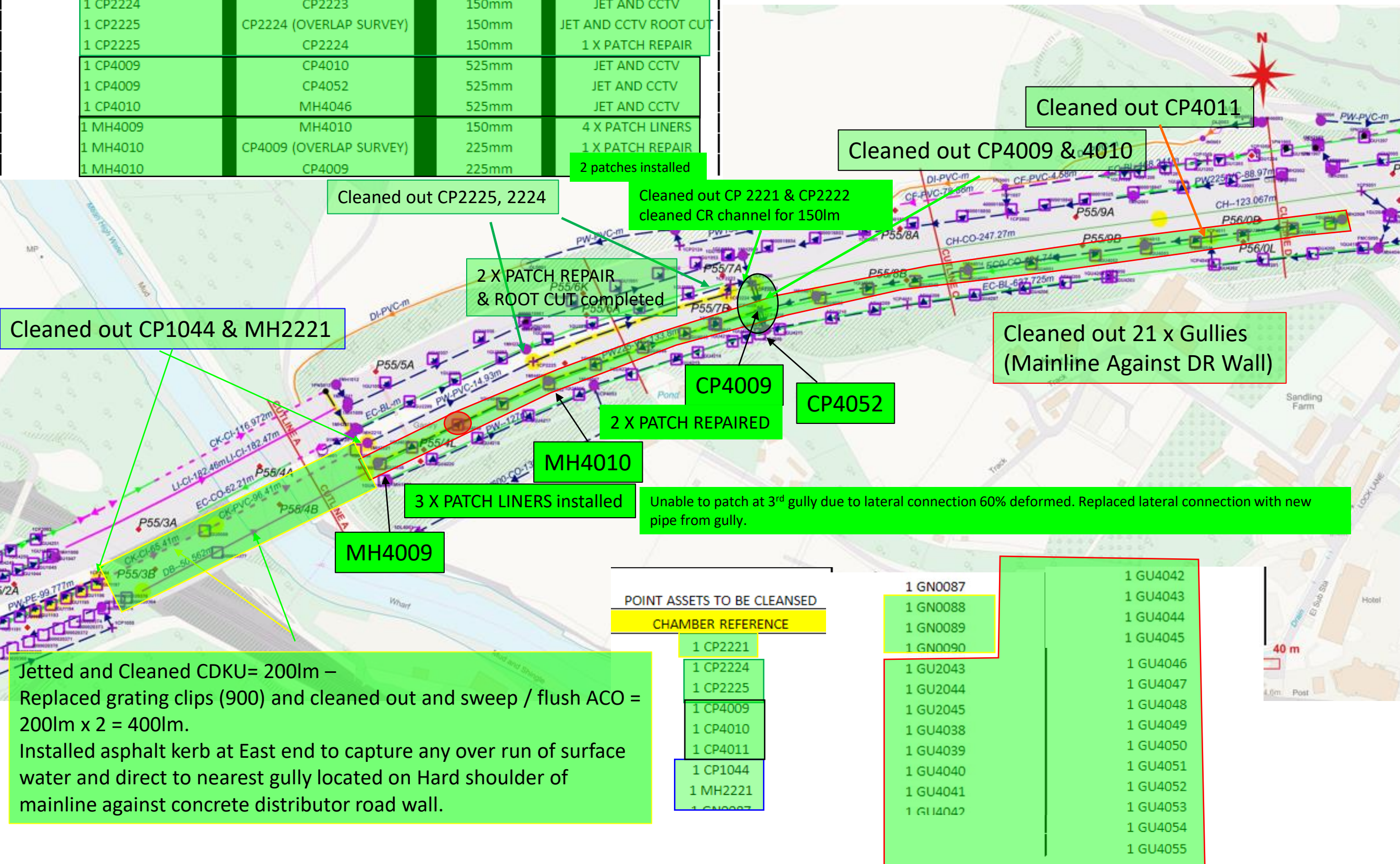


CONTINUOUS ASSETS

| UPSTREAM CHAMBER | DOWNSTREAM CHAMBER | PIPE DIAMETER | ACTION REQUIRED |
|------------------|-------------------------|---------------|-----------------------|
| 1 CP2222 | CP4009 | 450mm | JET AND CCTV |
| 1 CP2224 | CP2223 | 150mm | JET AND CCTV |
| 1 CP2225 | CP2224 (OVERLAP SURVEY) | 150mm | JET AND CCTV ROOT CUT |
| 1 CP2225 | CP2224 | 150mm | 1 X PATCH REPAIR |
| 1 CP4009 | CP4010 | 525mm | JET AND CCTV |
| 1 CP4009 | CP4052 | 525mm | JET AND CCTV |
| 1 CP4010 | MH4046 | 525mm | JET AND CCTV |
| 1 MH4009 | MH4010 | 150mm | 4 X PATCH LINERS |
| 1 MH4010 | CP4009 (OVERLAP SURVEY) | 225mm | 1 X PATCH REPAIR |
| 1 MH4010 | CP4009 | 225mm | 2 patches installed |



| POINT ASSETS TO BE CLEANSED |
|-----------------------------|
| CHAMBER REFERENCE |

- 1 CP2221
- 1 CP2224
- 1 CP2225
- 1 CP4009
- 1 CP4010
- 1 CP4011
- 1 CP1044
- 1 MH2221

- 1 GN0087
- 1 GN0088
- 1 GN0089
- 1 GN0090

- 1 GU2043
- 1 GU2044
- 1 GU2045
- 1 GU4038
- 1 GU4039
- 1 GU4040
- 1 GU4041
- 1 GU4042

- 1 GU4042
- 1 GU4043
- 1 GU4044
- 1 GU4045
- 1 GU4046
- 1 GU4047
- 1 GU4048
- 1 GU4049
- 1 GU4050
- 1 GU4051
- 1 GU4052
- 1 GU4053
- 1 GU4054
- 1 GU4055



Deformed lateral connection above MH4009 to MH4010 pipe



Post Repair CCTV footage of connection





Gully lead pipe replacement

- Excavate and replace deformed pipe from Gully to carrier drain.
- Reinstall with dry lean concrete mass fill
- Permatrack surface treatment.





C02758 – M20 J6 to J5 Drainage

Installed 91m of asphalt kerb to direct
Water over run from linear drainage
Channel to nearest gully grating



ACO CHANNEL GRATING BOLTS





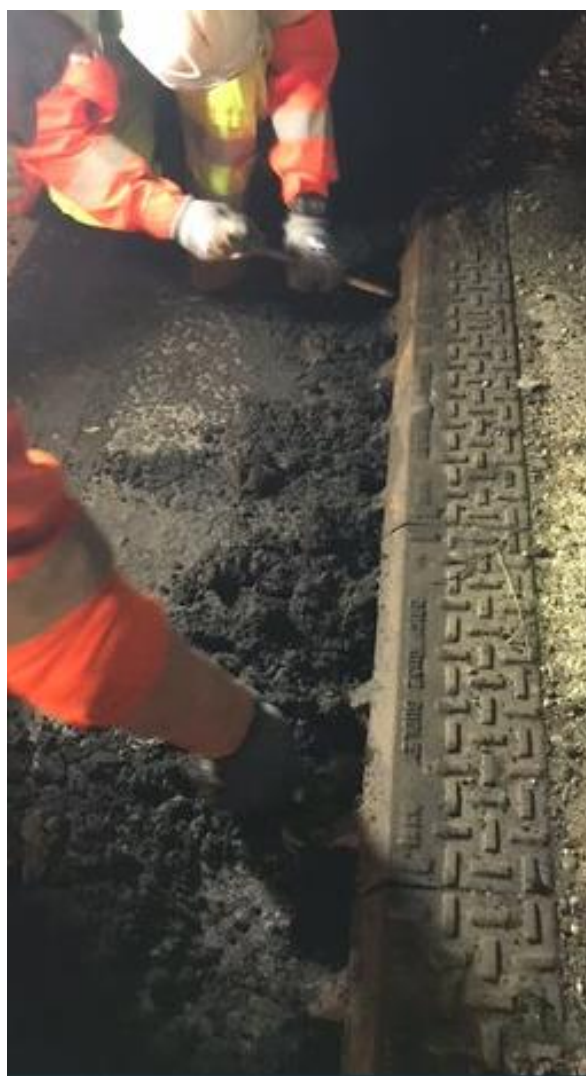
LDC on J6 to J5 Distributor Road cleansed and every Grating bracket was replaced



Cleansed the Combined Kerb Drainage Units (CDKU's) along the central reserve at the Medway River and railway crossings including Removal of detritus build up in front of the inlet apertures.



Cleansed the Combined Kerb Drainage Units (CDKU's) along the central reserve at the Medway River and railway crossings including Removal of detritus build up in front of the inlet apertures.



Cleaned out Catchpits in central reserve. Whilst Traffic management in place took opportunity to clean drainage channel over 150lm



Cleansed Catch pits in Central Reserve between VRS lines and although not part of original scope also cleansed 150 linear metres of wide concrete channel between the VRS lines.

